



HV10 High Velocity for Aluminum

The Mil-Tec HV10 series is a high performance milling system for Aluminum and non-ferrous alloys. The long 1.020" insert length is ideal for



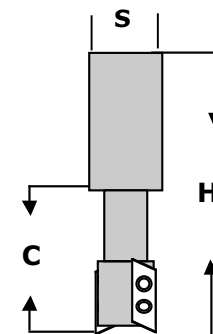
deep axial cuts. A two screw design generates superior insert holding strength. The HV10 features razor sharp Smoothgrind® polished cutting surfaces allowing for smooth, clean cuts resulting in excellent part finishes.

- Long Edge Design
- 2 screws for maximum strength
- Positive Geometry, Free cutting
- Cuts a 90° Shoulder
- MTC322 for Dry Milling
- Super Shear SmoothGrind® Insert Geometry

HV10 437 Series

HV10 Shank Style Bodies for .437" Wide Insert

CUTTER PART #	CUTTER EDP#	DIAMETER	SHANK (S)	OAL (H)	REACH (C)	# OF INSERTS	PRICE
HV10-1.25-2-6	70000	1.25	.750	4.50	2.00	2	\$157.50
HV10-1.25-2-8	70000	1.25	1.00	4.50	2.00	2	\$157.50
HV10-1.25-2-10	70000	1.25	1.25	4.50	2.00	2	\$157.50
HV10-1.5-3-8	70010	1.50	1.00	4.50	2.00	3	\$180.00
HV10-1.5-3-10	70020	1.50	1.25	4.50	2.00	3	\$180.00



HV10 SuperShear .437" Wide Inserts

PART # .437 SERIES	RADIUS	MTC20 / ALUMINUM UNCOATED \$19.00	MTC322 / ALUMINUM TIB2 COATED \$22.00
HV10-437-032S	.032	80000	80001
HV10-437-062S	.062	80010	80011
HV10-437-125S	.125	80020	80021
HV10-437-197S	.197	80030	80031



HV10 500 Series

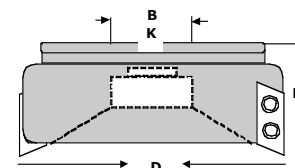
HV10 Shank Style Bodies for .500" Wide Insert

CUTTER PART #	CUTTER EDP#	DIAMETER	SHANK (S)	OAL (H)	REACH (C)	# OF INSERTS	PRICE
HV10-2-3-10		2.00	1.250	4.50	2.00	3	\$245.00



HV10 Shell Mill Style Bodies for .500" Wide Insert

CUTTER PART #	CUTTER EDP#	DIAMETER	BORE (B)	KEYWAY (K)	HEIGHT (H)	# OF INSERTS	PRICE
HV10-2-3	70030	2.00	.750	.312	2.150	3	\$245.00
HV10-3-5	70040	3.00	1.00	.375	2.150	5	\$375.00
HV10-4-5	70050	4.00	1.50	.625	2.185	5	\$490.00
HV10-5-6	70060	5.00	1.50	.625	2.185	6	\$560.00
HV10-6-7	70070	6.00	1.50	.625	2.185	7	\$620.00



HV10 SuperShear .500" Wide Inserts

PART # .437 SERIES	RADIUS	MTC20 \$19.00 UNCOATED	MTC322 \$22.00 TIB2 COATED
HV10-500-032S	.032	80050	80051
HV10-500-062S	.062	80060	80061
HV10-500-125S	.125	80070	80071
HV10-500-197S	.197	80080	80081



HV10 Screw: HV1032 (T15 Torx®)
T15 Torx Wrench Not Included