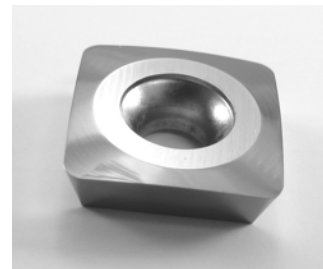


New Three Pocket DFC

Dedicated Finish Cutter

New Three Pocket design Allows for increased Feed Rates

The Dedicated Finish cutter's unique design combined with the NP insert geometry allows for excellent finishes at high feed rates. Feed rates ranging from 50 to over 100 IPM in steel and stainless steels. The DFC uses standard square Freedom Cutter inserts which allows for hundreds of grade, coating, radius and SmoothEdge options.



Dia	Height	Keyway	Bore	# of Inserts	Part#	EDP	List
2"	1.725	5/16"	3/4"	3	DFC-2-3	02190	\$200.00
3"	1-7/8"	1/2"	1-1/4"	3	DFC-3-3	02190	\$300.00
3"	1-7/8"	.380"	1"	3	DFC-3-3NS	02192	\$300.00
4"	1-7/8"	5/8"	1-1/2"	3	DFC-4-3	02193	\$400.00
5"	1.950"	5/8"	1-1/2"	3	DFC-5-3	02194	\$500.00
6"	1.950"	5/8"	1-1/2"	3	DFC-6-3	02195	\$600.00
8"	2"	1"	2-1/2"	3	DFC-8-3	02196	\$800.00

List Price

Uncoated \$13.50

Coated \$14.50

Freedom Cutter Square Inserts / NP Geometry

Grade	.032"	.062"	.125"
20UC	72320UC	72520UC	72720UC
51TA	72351TA	72551TA	72751TA

Grade 20UC: Aluminum and non-ferrous

Grade 51TA: Steel and stainless steel

Tech Notes:

- Speeds: Use recommended Freedom cutter speeds
- Feeds: .003" to .030" CPT
- Radial WOC: ≤ 65% of body width
- Aluminum: Light coolant or dry
- Steel / Stainless: Dry to light oil or coolant mist.