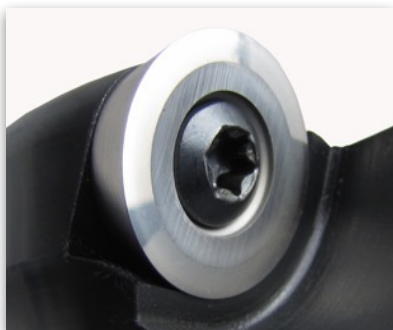


Mil-Tec

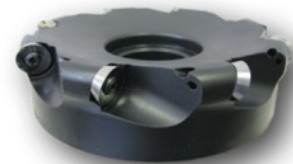


Performance Milling in Titanium

Mil-Tec has developed a dynamic combination of geometry, polished cutting edges, edge preps and coatings for milling Titanium!



- Round NP Geometry
- Mirror polished cutting edges
- SE2 hone
- AT - AlTiN SmoothCoat®
- A1 - TiB2 SmoothCoat®
- \$16.50 ea. (8 cutting edges)



Mil-Tec's #71012-ATA1 Coated Insert blends NP geometry, precision ground mirror polished cutting edges and SmoothCoat® PVD coatings. Our AT / AlTiN coating has maximum wear resistance and thermal stability. The A1 / TiB2 coating provides a reduced coefficient of friction, less chip weld and freer cutting conditions

High Performance Titanium Milling for the Freedom Cutter!

Recommended Speeds and Feeds:

- SFPM: 150 to 200
- CPT: .006" to .010"
- Axial DOC: .025" to .075"
- Use with Coolant

Mil-Tec #71012-ATA1 inserts can be used in standard Freedom Cutter bodies. They are also ideal in the FCDR Dedicated Round Freedom Cutter (Top page #7 of the Mil-Tec catalog). The FCDR has a redesigned insert pocket for increased strength and accuracy. The FCDR only uses Freedom Cutter round inserts and has been optimized for increased shear.